

Country Perspectives and Experiences-Botswana

*Grace G. Tabengwa
Research Fellow
Botswana Institute for Development
Policy Analysis*



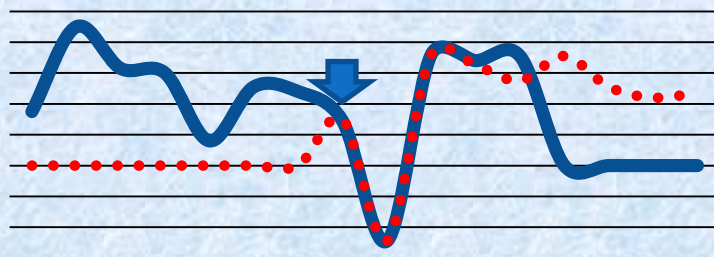
Outline of Presentation

- ❖ **Introduction- The Economy vs 2010 CPIA scores**
- ❖ **Approach to CPIA data compilation and validation**
- ❖ **Botswana ACI Outcomes**
- ❖ **Analysis/Challenges**
- ❖ **Summary**
 - ❖ **Benefits of the CPIA and Self Assessment**

Overview

- Fragile economic environment in 2010 vs CPIA of Indicators and scores
- Recovery path and adjustment following the global financial and economic crises 2007/08
- Developments directly impacted on most CPIA data indicators of focus in Botswana- GDP, Fiscal Policy, Implementation of development programmes/policies
- Improvement in 2010 indicators compared to 2009 –though sustenance of the growth path remains uncertain given global risks
 - Positive GDP Growth in 2010 compared to -4.6% decline in 2009
 - Reduction in budget deficit in 2010-tight fiscal stance
 - Impacting on CPIA indicators and ranks for the macro, the financial sector, business environment, implementation of policies for growth and development

GDP Growth Determined by Mining Sector Performance



— Gov't GDP Growth Projections
•••• IMF/World Bank GDP Growth Forecasts

Government Budget Position (Surplus/Deficit % of GDP)



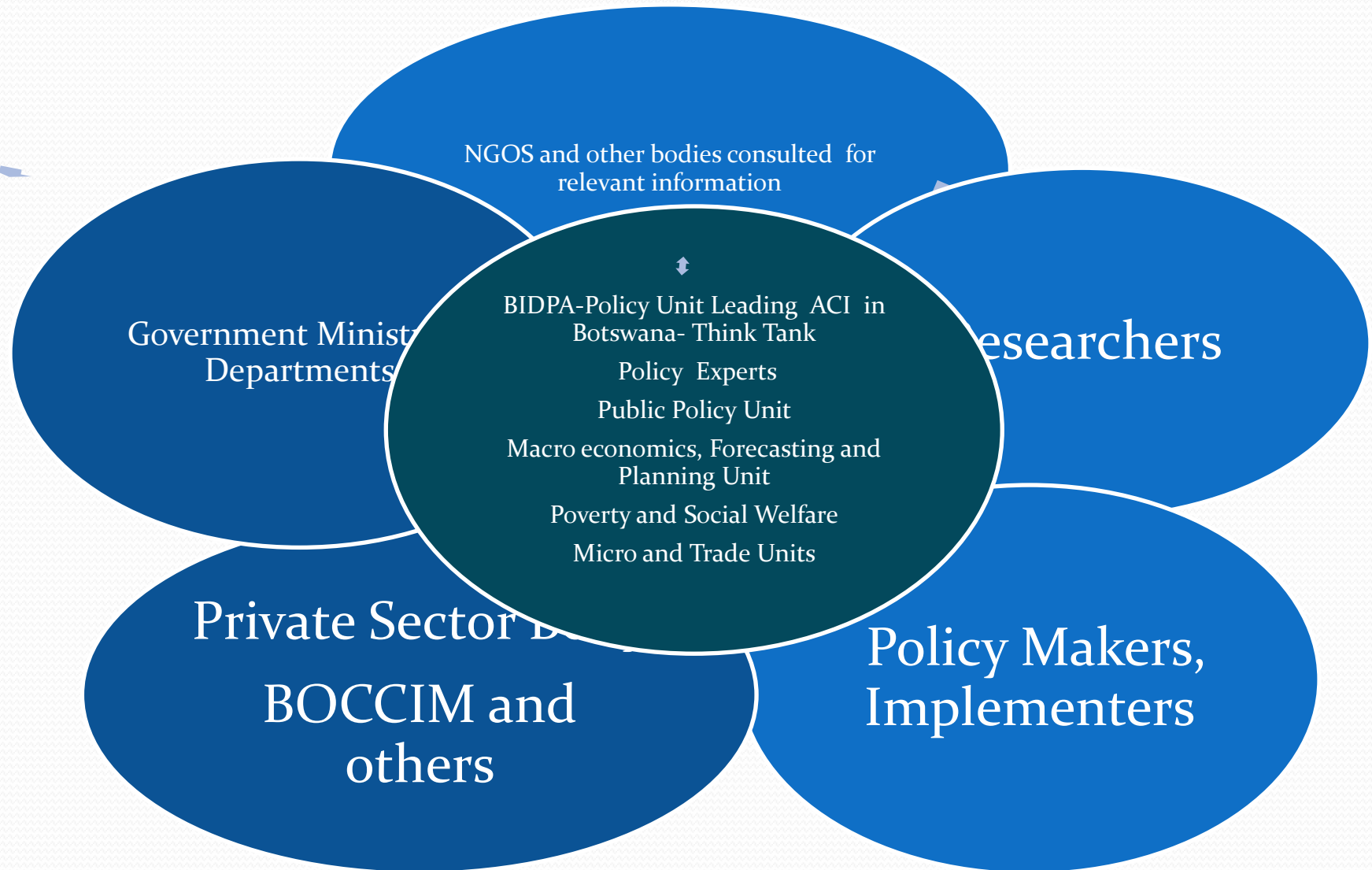
Approach to ACIA

- Time constraint for a fully fledged survey and comprehensive questionnaire administration as well as resource and budget constraint
- Scores awarded for Botswana based on:
 - Scores by constituted team of experts
 - Macroeconomics, Forecasting and Planning
 - Public Sector Unit
 - Micro
 - Trade
 - Poverty and Social Welfare
 - Collaboration with various Gov't Departments, Ministries , NGOs on policy formulation, reviews, implementation issues in Botswana
 - Leading team-BIDPA –Macro F&P Unit
 - Discuss components of questionnaire
 - Defined and set of indicators, documentation to inform scores and collected the data for basis of scores
 - Indicators also informed by Training workshop attended by Policy Units in Harare, August 2011
 - Participate in rankings by policy researchers team and validation following the ranks
 - Consultations where necessary on some questions and data
 - Average scores validated
 - Comparison with 2009 scores- compiled data set to track indicators

Varied Sources/Consultations

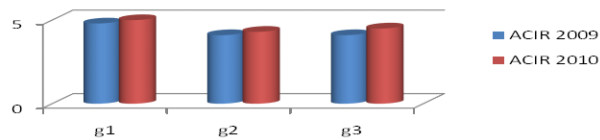
- Think Tank- Researchers, Policy makers and advisers
- Available research and data base at BIDPA
- MFDP
- Central Bank, BoB
- Private Sector
- Ministry of Trade
- National Statistical office
- Budget Authorities- MFDP
- Ministry of labour and home Affairs
- Trade and investment promotion agencies
- Revenue Authorities
- BIDPA research and data base

Scores and Validation Team

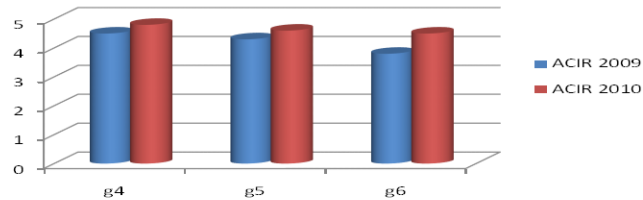


Outcomes 2009 vs 2010 ACI...

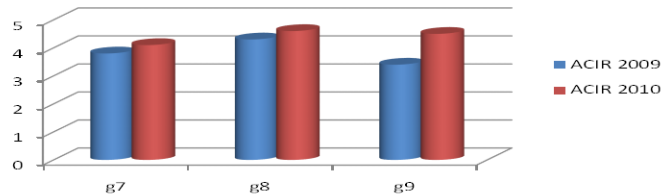
1. Macroeconomic Management



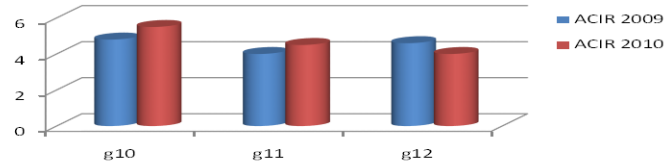
2. Fiscal Policy



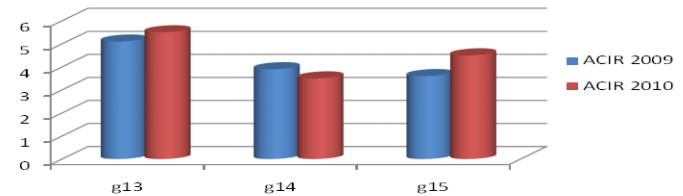
3. Debt Policy



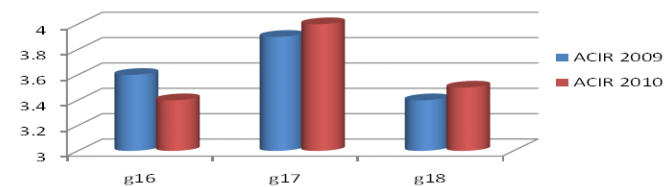
4. Policies and institutions for Economic Cooperation, Regional Integration and Trade



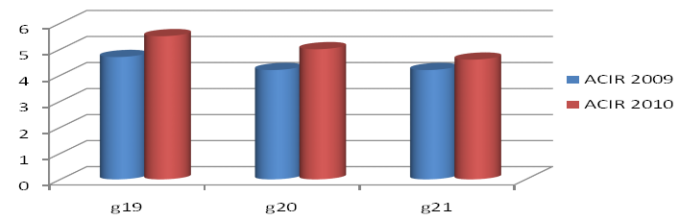
5. Financial Sector



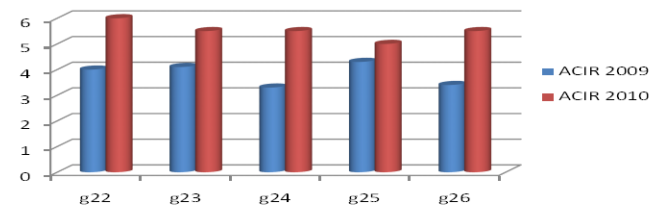
6. Business and Regulatory Environment



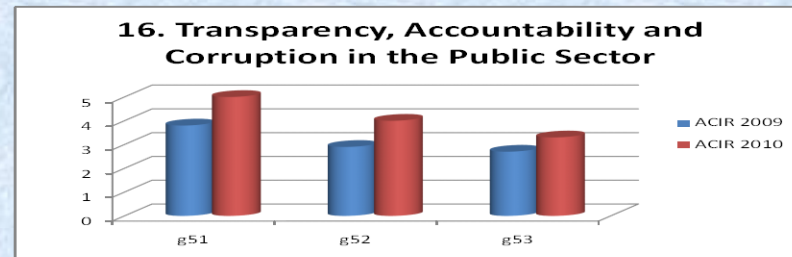
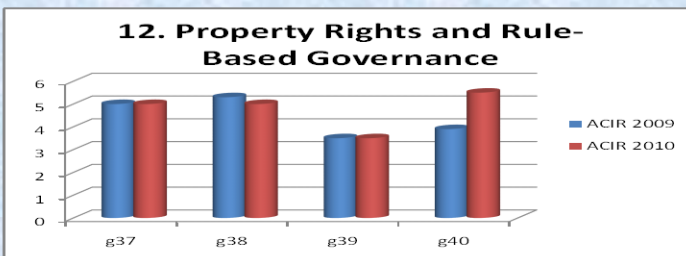
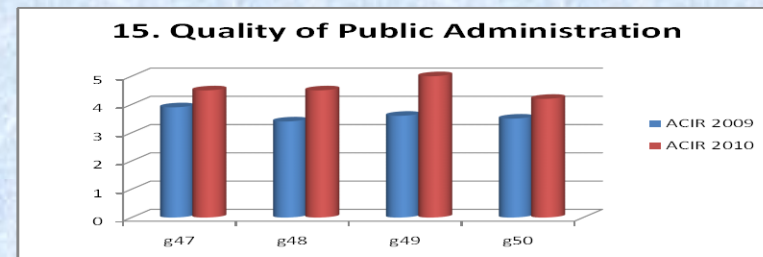
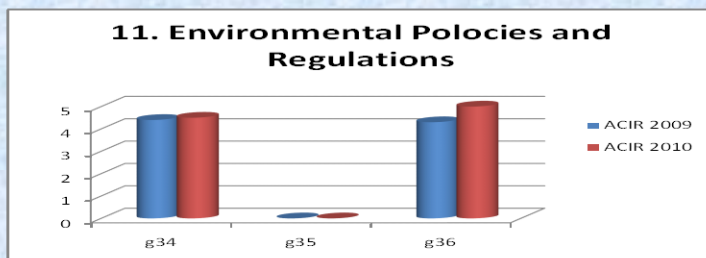
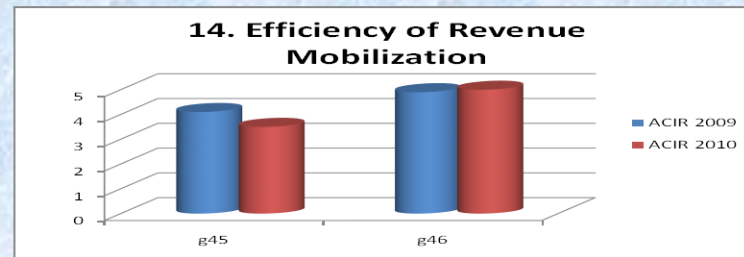
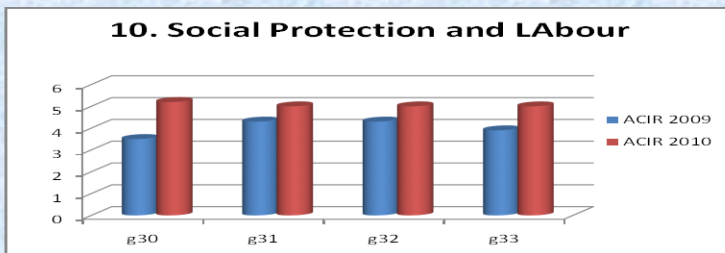
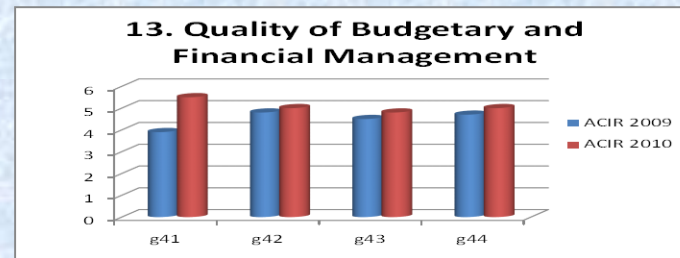
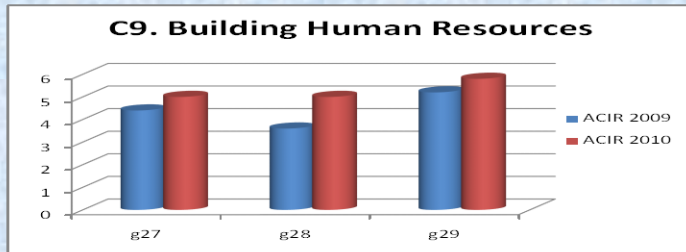
7. Gender Equality



8. Equity of Public Resource Use



Outcomes 2009 vs 2010 ACI...

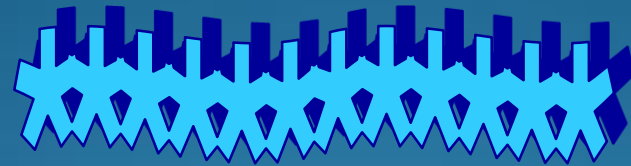


Analysis and Challenges

- Improvement in some indicators in 2010 as economy recovers
- Caution in scores-sample, continuity issues, views towards scoring, increased indicators for some questions
- Implication and Interpretation of observed changes in scores for specific countries
- Challenges
 - Time constraints
 - Resources
 - Sample coverage considerations and response
 - Comparability over time, continuity and consistency

Summary-Importance of ACI

- Results support self assessment,
 - Representative and reliable country information,
 - Validation exercise by experts and stakeholders at country level
 - Yields important information to inform policy, debates and comparative analysis
 - Useful ACIR annually-comparative information for various countries
 - Areas of strength/weakness for focused policy interventions and alignment of strategies for capacity development
- however still crucial to:
 - raise awareness of importance, use, availability of ACI
 - Remains limited in some countries, Botswana eg.
 - Stakeholder buy-in could be increased through collaborative efforts with ACBF and Policy Units
 - Dissemination of results- to Policy makers, academics, Government, Private sectors and other relevant stakeholders-
 - Country launch/workshop results



merci beaucoup

