



THE AFRICAN CAPACITY
BUILDING FOUNDATION

FONDATION POUR LE RENFORCEMENT
DES CAPACITES EN AFRIQUE

ACIR DESIGN AND ROLL-OUT (STRATEGY, FIELD SURVEYS & DATA COLLECTION)

Presented at 2012 ACIR Validation Workshop
Tunis, TUNISIA (19-20 January, 2012)

By

Robert NANTCHOUANG

Knowledge Management Expert

The African Capacity Building Foundation, Harare



OUTLINE

- I - ACIR TEAM ORGANIZATION
- II - DATA COLLECTION PROCESS
- III - QUALITY CONTROL



I- ACIR TEAM ORGANIZATION

The production of the Africa Capacity Indicators Flagship Report is a team work involving members at various level, mainly:

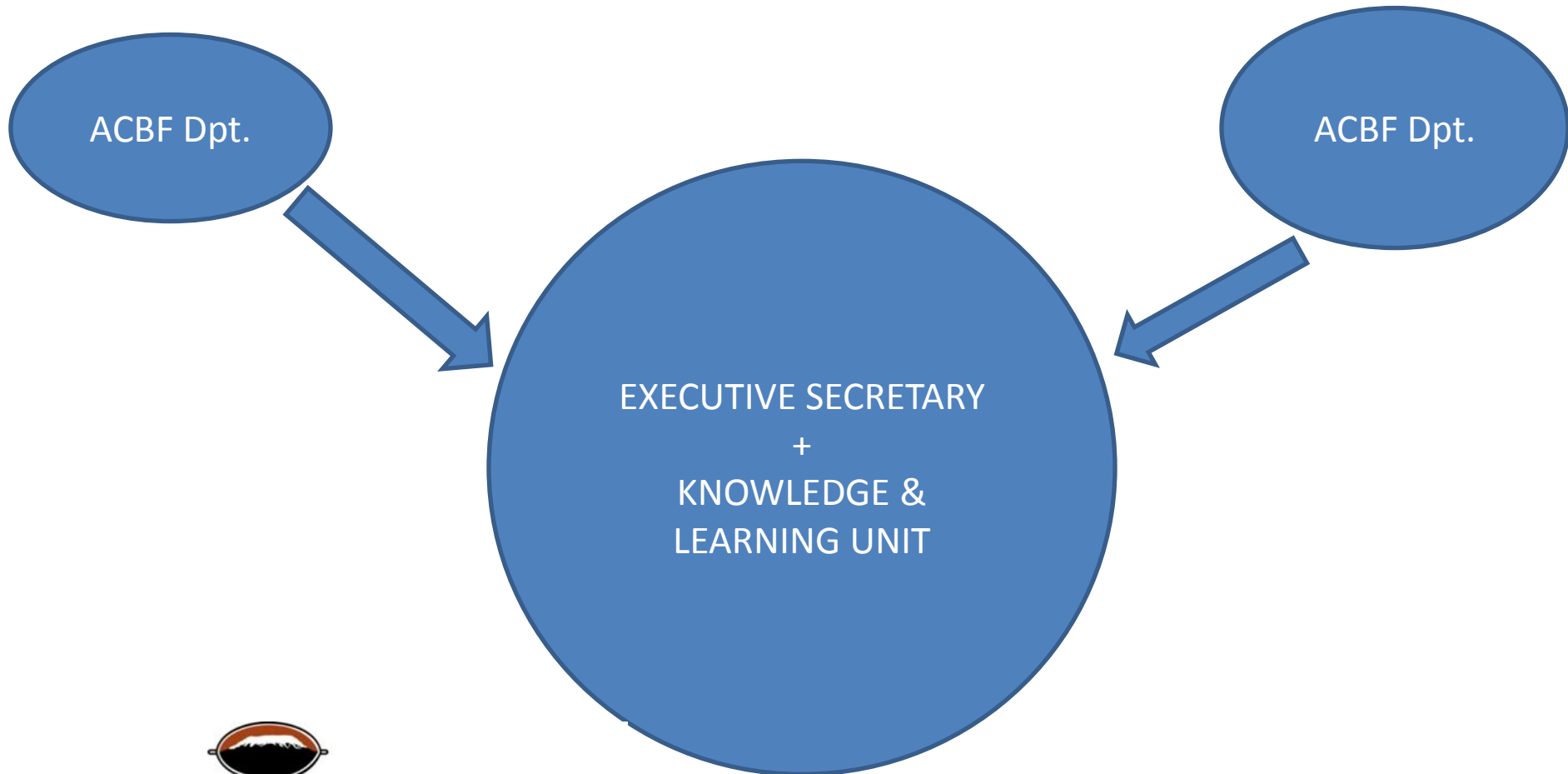
- ACBF Secretariat
- Consultants
- ACBF-supported Policy Institutes
- External Reference Group
- Other stakeholders



ACBF SECRETARIAT

AT ACBF SECRETARIAT LEVEL, A CORE TEAM

Supported by various ACBF Departments



PARTNERS

CONSULTANTS

- Drafted the background papers

POLICY INSTITUTES

- Conducted the CPIA country self-assessment

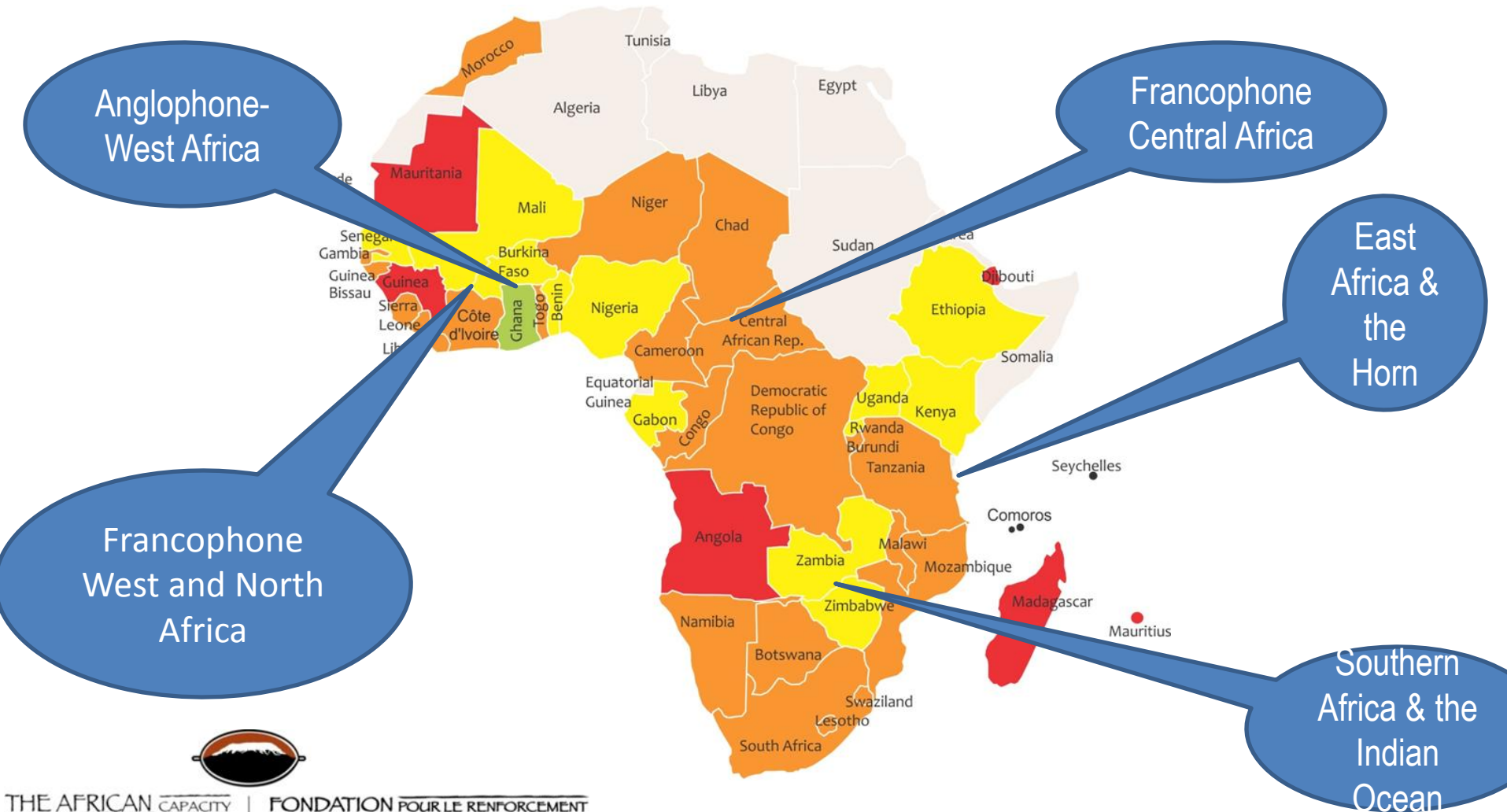
EXTERNAL REFERENCE GROUP

- Acted as the ACI team's strategic partner to provide motivation and intellectual guidance;
- ERG members come from Africa (7); America (4) and Europe (9)



REGIONAL FOCAL POINTS

On the basis of their geographic and linguistic affinity, the targeted countries were grouped into five broad regions. A Policy Unit was tasked with coordinating and supervising the country data collection process within each of regions.



DATA COLLECTORS

AT COUNTRY LEVEL

17 POLICY INSTITUTES

Conducted the Country Policy and Institutional Assessment (CPIA)

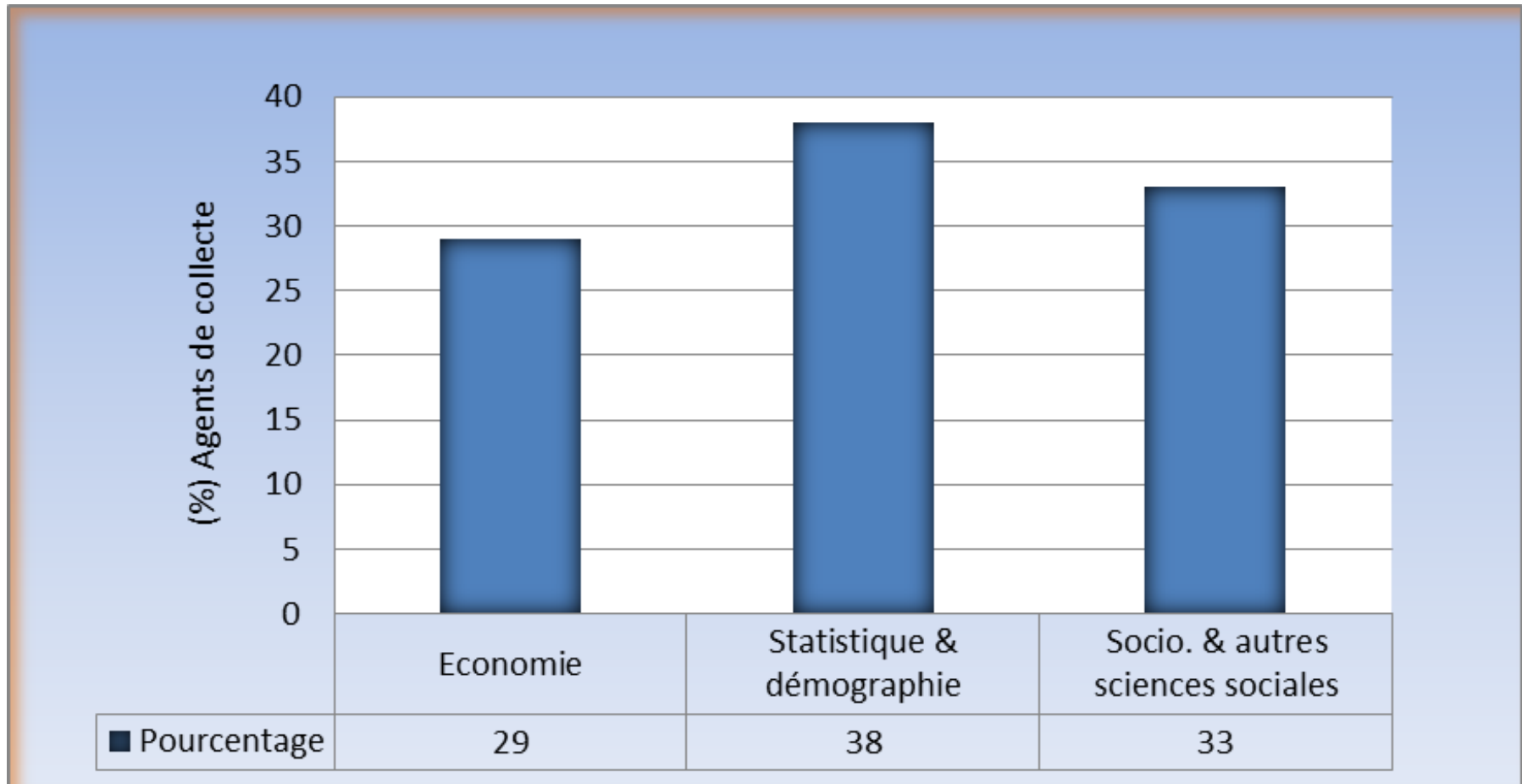
- Collected data on the 16 criteria in the CPIA questionnaire
- Analyzed data
- Rated each of the 4 clusters of the CPIA
- Drafted a report on the country self-assessment

42 IN-COUNTRY DATA COLLECTORS

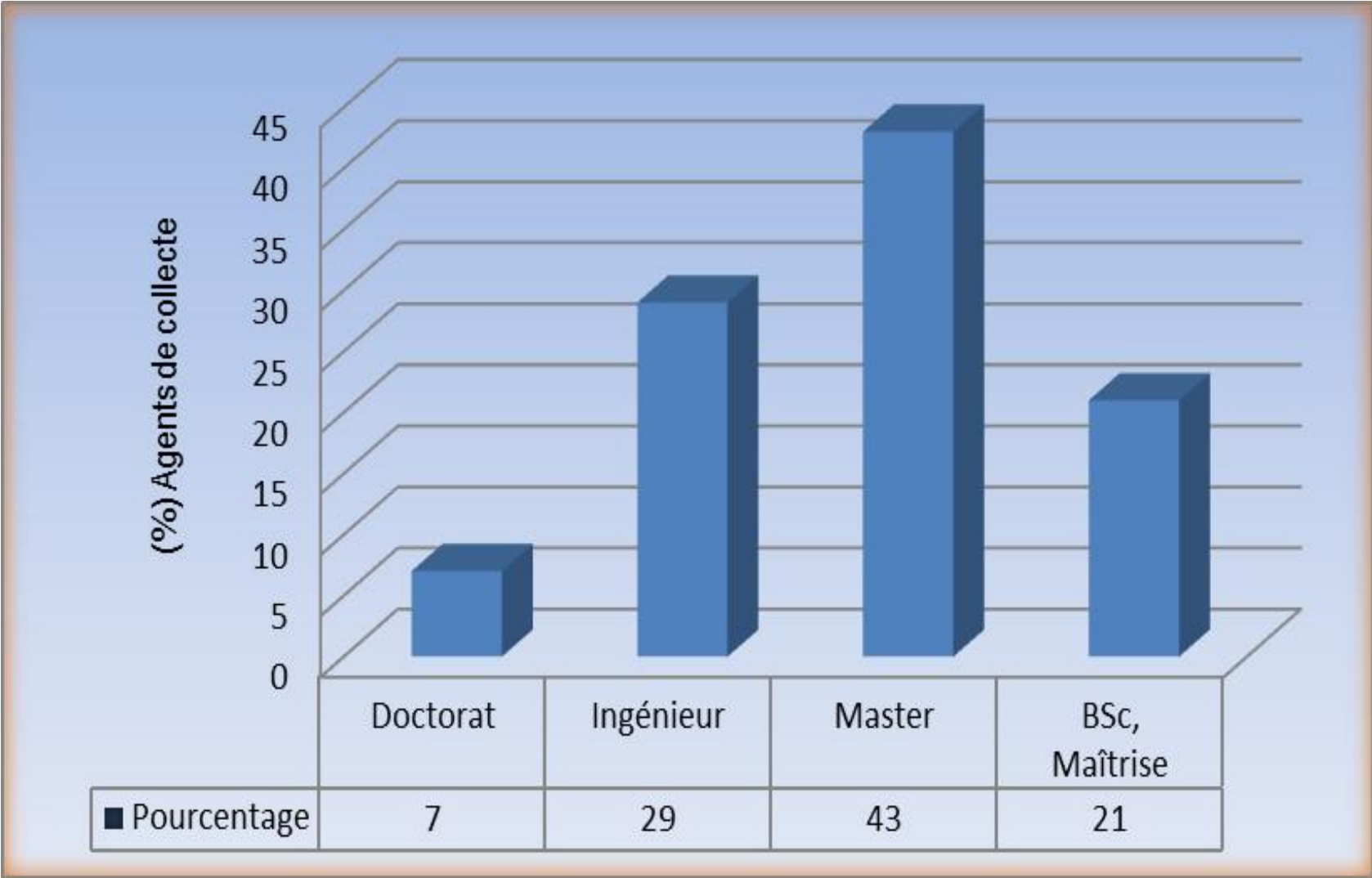
Administered the questionnaire on the field (except Section G on CPIA)



The data collectors had relevant backgrounds



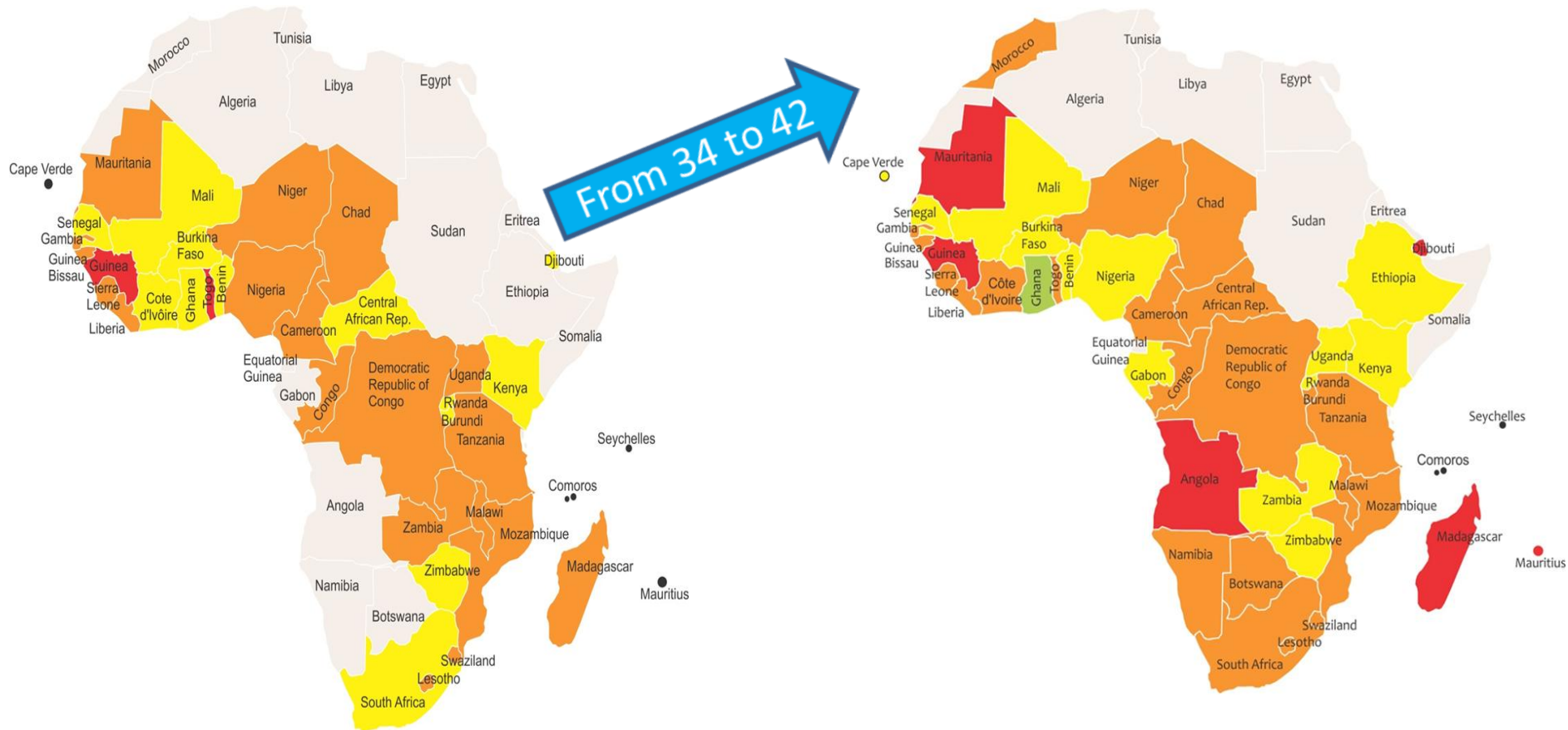
And had high academic levels



II- DATA COLLECTION PROCESS

2.1 Coverage

ACBI is on good track to meet the target of covering all African countries. The number of countries covered in 2011 increased



2.2 DATA COLLECTION INSTRUMENT

The data collection instrument is designed along the three dimensions of capacity:

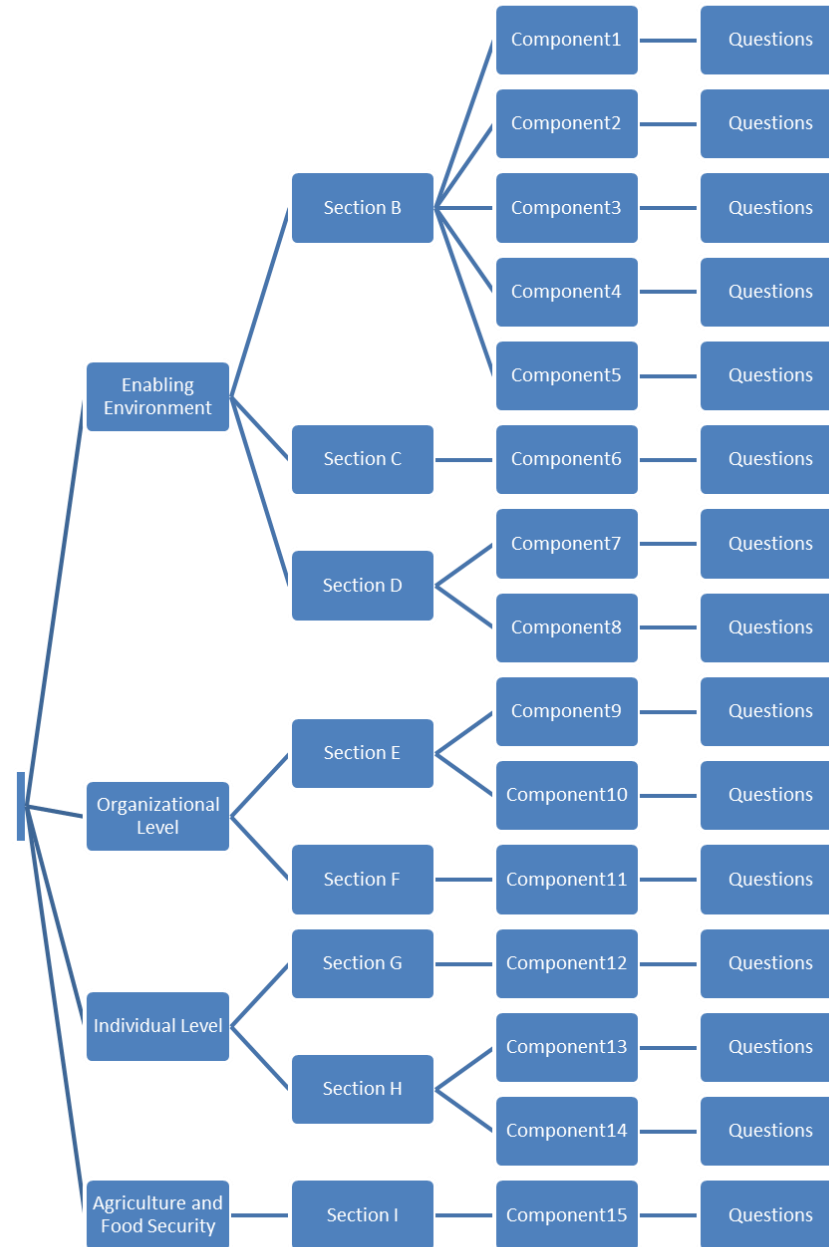
- i. Enabling environment
- ii. Organizational level
- iii. Individual level.

However, two specific sections are dedicated to explicit issues:

- Section G on the Country Policy and Institutional Assessment (CPIA) and
- Section I on Agricultural Transformation and Food Security, the thematic focus of this year's Report.



Structure of the data collection



2.3 TRAINING WORKSHOPS

A training workshop was organized from 13-18 June 2011 for all the selected in-country data collectors who were to administer the main questionnaire (excluding Section G on CPIA which was done by the Policy Institutes)

During the training workshop for in-country data collectors:

- Methodology discussed
- Data collection instrument discussed and reviewed
- Potential sources of information per country discussed and agreed upon.
- However, it was acknowledged and agreed that the list could be adjusted during the field data collection to suit country-specific needs

A separate workshop was organized from 1-3 August 2011

For the seventeen (17) Policy Institutes Directors or experts that were to lead the CPIA country self-assessment in their respective countries.



III- QUALITY CONTROL

Quality control effected at various stages

During data collection:

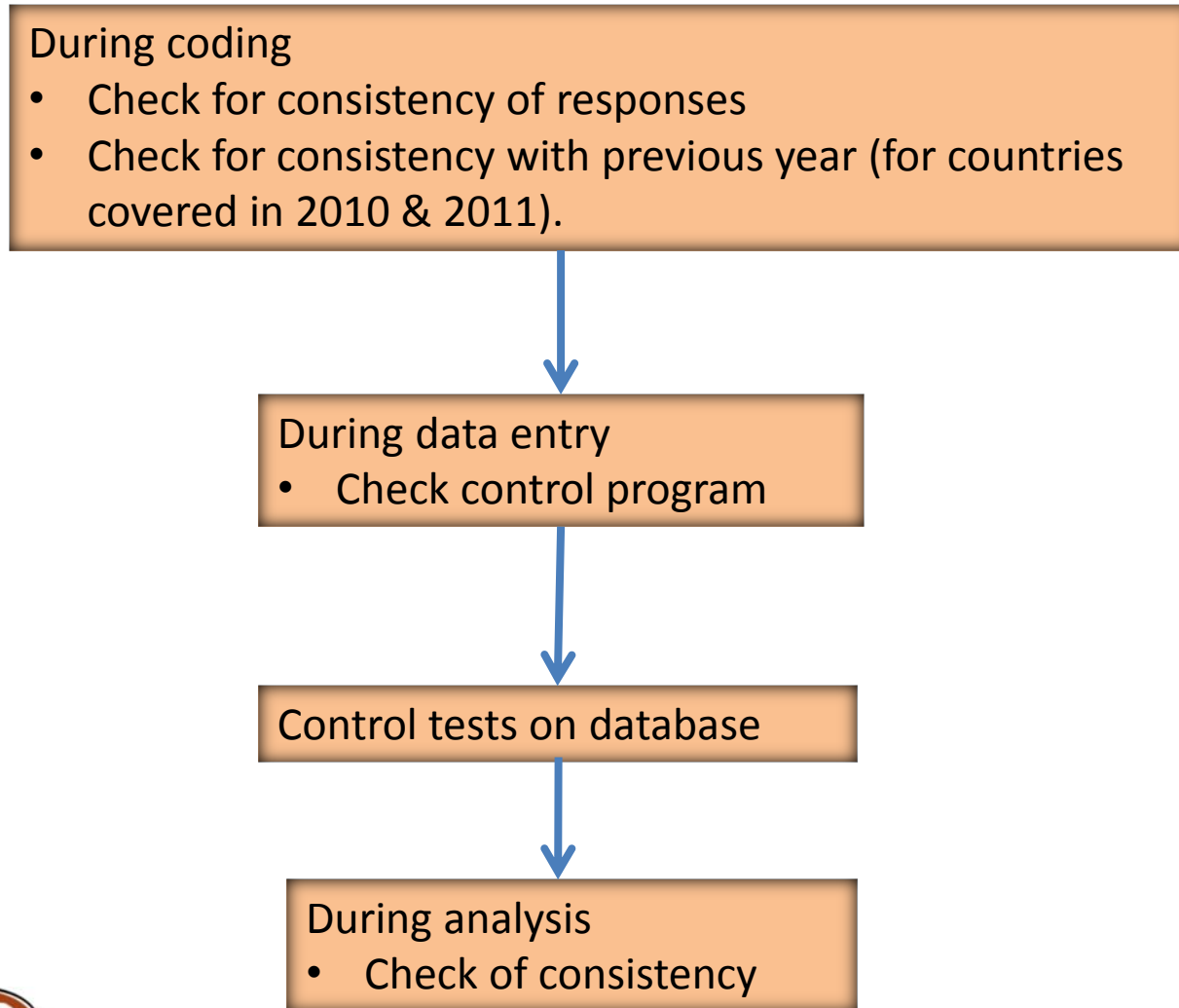
- Regional Focal Points supervised and assisted on various issues at regional level
- Data collectors submitted weekly progress reports to both ACBF and their respective Regional Focal Points.

At the end of the data collection:

- Data collectors submitted a scanned copy of the filled questionnaires, along with a the final report.
- The review of the questionnaire went through the steps described below



Quality control once scanned copy of the questionnaire submitted, along with final report



Thank you for listening!



Merci de m'avoir écouté

